

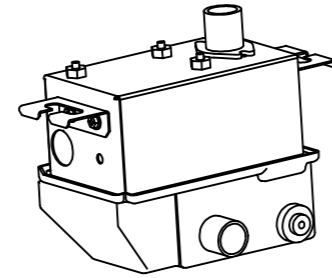
Hisense

Operation & Installation Manual

MODEL:HPS-151

Applied Unit:
In-the-ceiling Type

External Drain Pump



IMPORTANT:
READ AND UNDERSTAND THIS MANUAL
BEFORE USING THIS EXTERNAL DRAIN PUMP.
KEEP THIS MANUAL FOR FUTURE REFERENCE.

IMPORTANT NOTICE

- Read and understand this manual before using this external drain pump. If the instructions are not followed, it may result in a serious water leakage.
- Do not install the drain pump where there is a high level of oil mist, dust, flammable gases, salty air or harmful gases.
- Hitachi's liability shall not cover defects arising from the alteration performed by a customer without Hitachi's consent in a written form.
- Hitachi's pursues a policy of continuing improvement in design and performance of products. The right is therefore reserved to vary specifications without notice.
- No part of this manual may be reproduced without written permission.
- Signal words(DANGER,NOTE) are used to identify levels of hazard seriousness. Definitions for identifying hazard levels are provided below with their respective signal words.

DANGER: Immediate hazards which WILL result in severe personal injury or death.

NOTE: Useful information for operation and/or maintenance.

CHECKING PRODUCT RECEIVED

- Upon receiving this product, inspect it for any shipping damage. Claims for damage, either apparent or concealed, should be filed immediately with the shipping company.
- Check the model and quantity to determine if they are correct.

1. Before Installation

NOTE

Check to ensure that the quantity of the drain pump and accessories are in accordance with the table below.

| NO. | Accessory | Q'ty | Purpose |
|-----|---------------------|------|-------------------------------|
| 1 | External Drain Pump | 1 | |
| 2 | Washer | 4 | For the Drain Pump Suspension |
| 3 | Drain Hose | 1 | |
| 4 | Drain Pipe | 1 | For Drain Hose Connection |
| 5 | Hose Clamp(Small) | 2 | |
| 6 | Hose Clamp(Big) | 2 | For tightening the Drain Hose |

- If any of these accessories are not packed, please contact your contractor.
- The installation position should be able to support the 4 times weight of the drain pump, and should not lead to noise and vibration increase. If not strong enough, the drain pump may fall down.
- The indoor unit installation should meet the relative instructions.

(正面)

2. Installation

2.1 Drain Pump Installation

As shown in Fig. 1, Mount the drain pump close to indoor unit by using the suspension bolts, the size of drain pump is shown in Fig. 2. Keep the distance between the drain piping of indoor unit and inlet of drain pump ($a \geq 600\text{mm}$), as shown in Fig. 3.

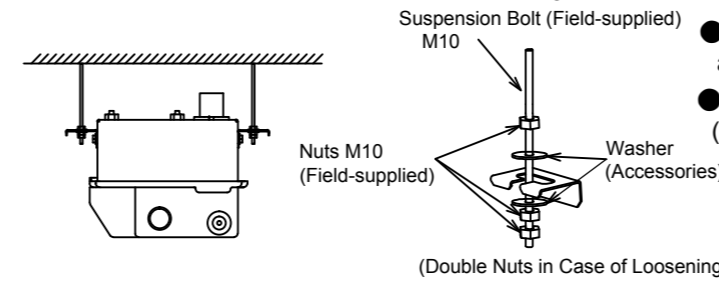


Fig. 1 Mounting of External Drain Pump

DANGER

Tighten the nuts of the suspension bolts. If not done, the drain pump may fall down.

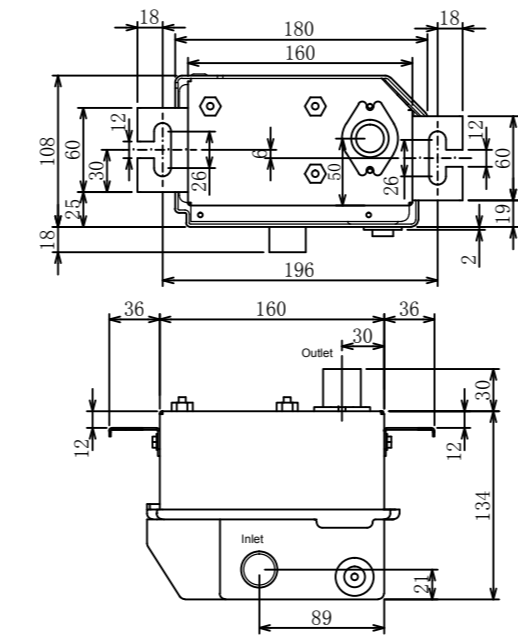


Fig. 2 Dimension of External Drain Pump

2.2 Drain Pipe Installation

NOTE

Do not create an upper-slope or rise for the drain piping of the indoor unit, since drain water can flow back to the indoor unit and leakage into the room when the unit is stopped.

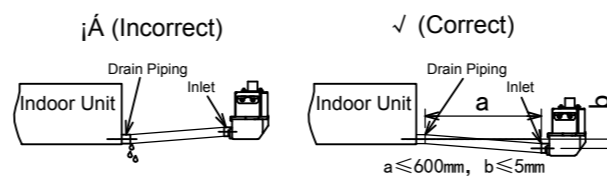


Fig. 3 Drain Pipe Installation

- The drain piping must be performed with a down-slope pitch of 1/50~1/100. Upper-slope or rising part will lead to water flowing back and drainage leakage.

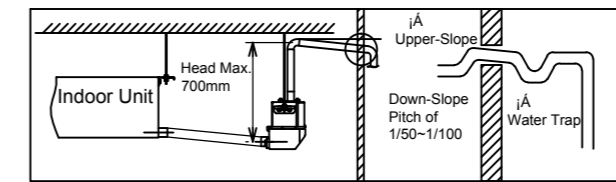


Fig. 4 Drain Piping

- Fasten the tube to the drain hose with the adhesive agent and the factory-supplied clamp.
- Insulate the drain pipe using the polyvinyl chloride packing (thickness 8mm above) to avoid water condensing and drip.

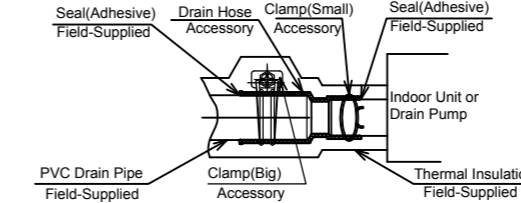


Fig. 5 Drain Pipe Insulation

2.3 Wiring Connection

DANGER

Check that the earth wire is securely connected. If the drain pump is not correctly grounded, it will lead electric shock.

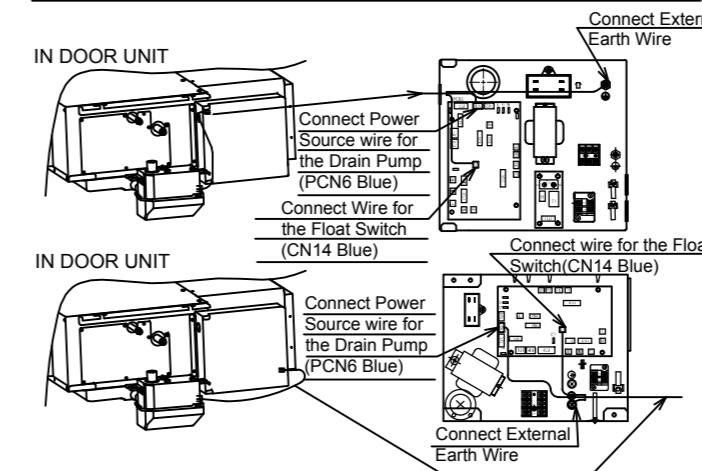


Fig. 6 Wiring Connection

Wiring Connection Steps

- 2.3.1 Before wiring connection, make sure that the wires components: the power source wire for the drain pump, the wire for the float switch, two earth wires (one is earth wire for the drain pump, the other is external earth wire).
- 2.3.2 The wiring connection between the external drain pump and the indoor unit is shown in Fig. 6. Firstly connect two earth wires on the metal shell of the drain pump, then connect the power source wire for the drain pump to the main PCB of the indoor unit (PCN6 Blue), connect the wire for the float switch to the main PCB (CN14 Blue), connect the external earth wire to the electrical box of the indoor unit. Connect all wires through the connecting hole and tightly secure them using the cord clamp in cabinet. Check that the earth wire is securely connected.

3. After Installation

Check for Float Switch Action

- Steps: Remove rubber stopper the bottom of the drain pump and connect with a flexible hose. Switch ON the power supply of the indoor unit, then pour water through the hose. Check to ensure that the water flows smoothly or whether no water leakage.
- Put the rubber stopper back on original position after check work and ensure good sealing.

(反面)